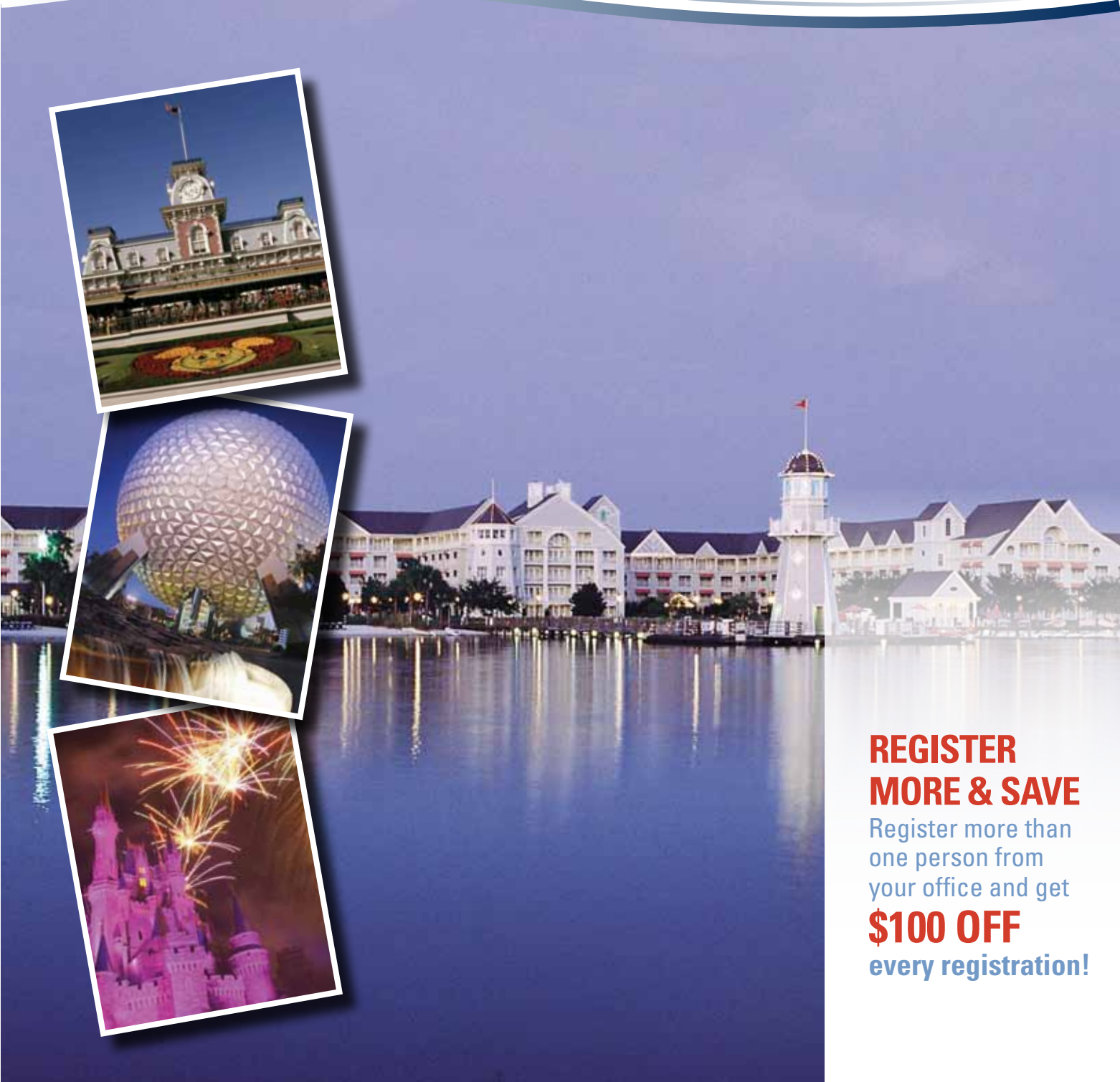


# 2012 SOFTPRO<sup>®</sup> USER GROUP CONFERENCE

Disney's Yacht Club Resort  
LAKE BUENA VISTA, FLORIDA  
MARCH 7 – 9, 2012



**REGISTER  
MORE & SAVE**  
Register more than  
one person from  
your office and get  
**\$100 OFF**  
every registration!

# 2012 SOFTPRO<sup>®</sup>

USER GROUP CONFERENCE

**Disney's Yacht Club Resort**  
LAKE BUENA VISTA, FLORIDA  
MARCH 7 – 9, 2012



We're going to Disney! Please join us for SoftPro's 13th Annual User Group Conference to be held March 7 - 9, 2012 at Disney's Yacht Club Resort in Lake Buena Vista, Florida.

We will kick off the 2012 conference with an opening reception and banquet on Wednesday evening, March 7, on the "magical" lakeside grounds of Disney's Yacht Club Resort. Thursday's schedule will begin with a new **Speaker Series** format that allows all conference attendees to hear a dynamic panel of guest speakers without missing out on other classroom offerings. The **Speaker Series** promises to motivate and educate with presenters focusing on hot topics in the closing and title industry and increasing productivity during the current economic environment. See page 3 for **Speaker Series** details.

Our selection of courses for 2012 includes SoftPro Select training as well as SoftPro Standard and Enterprise Edition training. While some courses offer intense instruction with hands-on training, others will help your business from a bigger picture perspective with open discussion and analysis. Whether you operate on SoftPro's newest Select platform or SoftPro's Standard or Enterprise Editions, there is truly something for everyone. For owners and managers, the 2012 conference will have offerings focused on office productivity and management reporting tools while IT professionals can benefit from our technical level courses. A complete listing of courses and their descriptions can be found beginning on page 3.

SoftPro is delighted to host its 2012 conference at Disney's Yacht Club Resort. Evoking the charm and elegance of New England seaside communities from the late 1800's, Disney's Yacht Club Resort welcomes you into a nautical world of hardwood floors, brass fittings and luxurious accommodations. Nestled along the shores of Crescent Lake, the Resort showcases a stunning sandy-bottom swimming pool, the Yachtsman Steakhouse and Ship Shape Health Club. The Resort is conveniently located within walking distance to Disney's BoardWalk Entertainment District featuring award-winning dining, exciting nightclubs and exceptional shopping, and just a leisurely stroll to Epcot® or a short boat ride to Disney's Hollywood Studios™. Here are just a few of the highlights for overnight resort guests:

- **Health Club**
- **Three-acre, heated sandy-bottom swimming lagoon**
- **Two heated quiet pools**
- **White-sand beach**
- **Marina with watercraft rental**
- **Two lighted tennis courts**
- **Sand volleyball court**
- **Grass croquet court**
- **Within walking distance of Epcot®, Disney's Hollywood Studios™ and Disney's BoardWalk Resort**
- **Nature walk, bike rentals and children's playground**

For more information on Disney's Yacht Club Resort, please visit <http://disneyworld.disney.go.com/resorts/yacht-club-resort/>

Register now to join us in March for two days of training that will impact your business for months and years to come.

## Conference Agenda

### Wednesday, March 7

12:15 PM	Golf Outing (optional)
2 - 4:30 PM	Registration
6 - 9 PM	Opening Banquet

### Thursday, March 8

7:30 AM	Continental Breakfast
8 - 9 AM	Keynote Address
9 AM - 12 PM	Classes
12 PM - 1 PM	Lunch
1 - 2 PM	Speaker Series
2 - 5 PM	Classes

### Friday, March 9

7:30 AM	Continental Breakfast
8 - 9 AM	Speaker Series
9 AM - 12 PM	Classes
12 PM - 1 PM	Lunch
1 - 2 PM	Speaker Series
2 - 3 PM	Classes

# Speaker Series

SoftPro is excited to offer a new Speaker Series format that allows all conference attendees to hear each of our dynamic speakers.

## Keynote Address: *The Richest Man in Town*

### V.J. Smith, Life's Great Moments

Thursday 8:00 AM – 9:00 AM

SoftPro is pleased to welcome V.J. Smith as its keynote speaker. V.J. Smith has been a professional speaker for more than a decade. V.J. has also been a bill collector, solar collector salesman and a fundraiser. He honed his speaking skills through his membership in Toastmaster's International. On two occasions he was a finalist in that organization's 'World Championship of Public Speaking.' A 1978 graduate of South Dakota State University, V.J. spent the 1980s working for the Allied Signal Aerospace Company in Kansas City, MO. He returned to his alma mater in 1990 to serve as Assistant Athletic Director for the SDSU athletic program. He was appointed Executive Director of the SDSU Alumni Association in 1996 and resigned from that position in January 2007.

The keynote session, *The Richest Man in Town*, is based on the life of 'Marty', a wonderful man who ran a cash register at Wal-Mart. He was considered rich because he was loved and respected, but most of all, he was content with every aspect of his life, no regrets. Marty's simple philosophies show what happens when you take the time to be kind and compassionate.

## Go where there is no path and leave a trail

### Justin Ailes, Vice President of Government and Regulatory Affairs, American Land Title Association

Thursday 1:00 PM – 2:00 PM

As Vice President of Government and Regulatory Affairs for the American Land Title Association, Justin is responsible for the title industry's federal and state government affairs, legislative and regulatory advocacy, political action committee (TIPAC), and legal activity and grassroots engagement. He is also Treasurer of TIPAC.

Justin will give attendees an update on the status of the Consumer Financial Protection Bureau's (CFPB) consumer mortgage disclosures to replace the current GFE and HUD-1. He will also talk about the status of legislation to reform Fannie Mae and Freddie Mac and how attendees can have a voice in the outcome of these government actions. He will also discuss how the relationships between title insurance agents and underwriters are evolving and how they can manage political risk together.

## Loan Quality Data and Its Pending Impact to the Title Industry

### Chris Christensen, PeirsonPatterson, LLP and Tim Conley, Sr. V.P. of Sales and Marketing, SoftPro

Friday 8:00 AM – 9:00 AM

Christopher W. Christensen is an associate with PeirsonPatterson, LLP, concentrating his practice on regulatory and compliance issues related to residential

real estate transaction documentation. His primary areas of focus include compliance rule implementation, multi-state form drafting projects, and residential mortgage lending eCommerce issues. Chris is a former member of the Mortgage Banker's Association (MBA) Board of Directors and is a Vice-Chair on the MBA Political Action Committee. He is a member of the MBA ResTech eMortgage Adoption Task Force, the Committee on Consumer Financial Services of the Business Law Section of the American Bar Association; the American Land Title Association RESPA Implementation Taskforce; the real estate legislative committee of the Real Estate, Probate, and Trust Law Section of the State Bar of Texas; and the Texas Bar. Chris also participates in the Mortgage Industry Standards Maintenance Organization (MISMO) where he co-chairs the eMortgage Legal Issues Subgroup. Chris received his bachelor's in business administration with a degree in Management Information Systems from the University of Texas at Austin, and a J.D. from Southern Methodist University School of Law. He completed the Mortgage Bankers Association of America Future Leader Program in 2003. Chris has spoken on financial privacy regulation, RESPA, and eMortgages; and coauthored a paper on the Fannie Mae/Freddie Mac Uniform Instruments.

Tim Conley joined SoftPro in 1997, and has personally sold over 1,500 customers SoftPro's Closing & Title Solutions and has helped the company build a customer base exceeding 14,000. Tim was acknowledged by October Research Corporation as one of the top 40 executives under 40 in the Settlement Services Industry. He currently sits on the Raleigh Chamber of Commerce Board of Advisors, the American Land Title Association's Member & Organization Committee, and the Ohio Land Title Association's Technology Committee.

Chris and Tim will jointly present on the topic of loan quality data's impact on the title industry. The new GSE's funding requirements will ultimately result in significant changes to how title companies deliver closed transactions back to the funding lenders. With the GSE's and FHA funding virtually all the real estate transactions in 2010 and 2011, the recent programs being implemented will drastically change the way loan portfolios are sold to the secondary market. This session will cover how the MISMO data standards and how Fannie Mae & Freddie Mac's Loan Quality initiatives will forever change the way mortgage backed securities are bought and sold on the secondary market.

## The Exceptional Employee

### V.J. Smith, Life's Great Moments

Friday 1:00 PM – 2:00 PM

Drawing on his twenty years serving as a supervisor, Smith gives ten qualities associated with exceptional employees. This talk is filled with anecdotes and humorous stories to illustrate key points. Every person in the audience will relate to the various categories in which we are judged in our working lives.

# Class Descriptions

Please note: All classes and schedules are subject to change.

## Courses for our 2012 conference are divided into 2 categories:

### SOFTPRO SELECT

### ADVANCED TRAINING FOR PROFORM STANDARD AND ENTERPRISE EDITIONS

Our highly-focused sessions allow attendees to round out their SoftPro knowledge by gaining expertise in specific areas. While each session has a prepared topic and material, users are encouraged to open discussions and share ideas – one of the most valuable benefits of past conferences.

### SOFTPRO SELECT CLASSES

Our 2012 conference features a dynamic offering of classes for SoftPro's newest, most flexible platform, SoftPro Select. SoftPro Select offers incredible flexibility and customization for the closing, title and escrow industry.

### Endless Possibilities with Select

Thursday 9:00 – 10:50

Come see for yourself why we describe SoftPro Select, SoftPro's next-generation product line, "unlimited everything." What you get with the Select platform is all the functionality of the other SoftPro platforms with unlimited options for handling the smallest cash sale to the largest commercial transaction. You want to close one buyer purchasing 100 properties from 200 Sellers

funded by five lenders using a separate HUD-1 for each property from a single order? Not a problem. With SoftPro Select you can enter an unlimited number of Order Contacts (lenders, contractors, attorneys, inspectors, etc. . .), Properties, HUD-1 forms, Loans, Title Commitments, Title Policies, Endorsements, Deeds, Invoices, HUD-1 fees, Checklist Tasks, Requested Tasks, and the list goes on. We'll cover advanced functions in SPAdmin, ProTrust, and SPImage. Select has the extra security and functionality you've been looking for.

### Know the Flow: Workflow for SoftPro Select

Thursday 11:00 – 11:50

Learn all about our new Workflow management tool in SoftPro Select. We'll show you how easy it can be to track turnaround time for your orders, manage employee workloads, reassign orders to ensure work is completed in a timely fashion, track ownership of

orders, keep checklist and requested track items updated, manage productivity through a wide range of reports and much more all while creating your own organization's specific workflow.

### SoftPro 360 Business Integrations with Select Thursday 2:00 – 2:50

Learn more about SoftPro 360 and our latest integrations with Microsoft Outlook, FedEx, UPS, and Underwriter Services. SoftPro 360 links SoftPro customers electronically with a wide array of third party vendors and service providers in the mortgage and title industry. By utilizing this new technology, our customers can reap significant cost savings by eliminating dual keying of information, reducing the amount of time spent communicating with vendors, and tracking all activity to your ProForm file.

continued next page

# Class Descriptions *(continued)*

Please note: All classes and schedules are subject to change.

## My Way with MyScreens for Select

**Thursday 3:00 – 3:50**

Learn how you can design your company's own custom screens, custom fields, custom calculations to enable Select to become the software that fits your every business need. Learn how you can set up Users and Groups and provide just the screens your employees need to see based upon the job function they perform within your organization.

## How to Manage Your Office with SoftPro Select Reports

**Thursday 4:00 – 4:50**

Ever want to know what reports SoftPro Select offers? Now you can! We'll review production reports to help you find efficiencies within your organization. We'll review revenue reports so you can gain the knowledge of how much revenue your organization is receiving. We'll show you how to manage your organization, your customers, your employees, types of orders and the revenue that goes along with it. We'll discuss report features such as the ability to export to Excel and other formats.

## The Complex Made Simple: SoftPro Select Complex Closings

**Friday 9:00 – 9:50**

This session is designed to show you how to make the most difficult closings easier to process. We will cover complex scenarios such as multiple HUD-1s in one order, the ability to transfer monies from a second loan to apply to the first without leaving the order. We'll discuss common balancing issues and how to more easily find out why your file may not be in balance. Feel free to bring any questions you may have regarding complicated closings. We ask that you bring your solutions to difficult closing situations as well! Your solutions might just save someone else time, too!

## What's SoftPro Doing to keep me Competitive in the Marketplace?

**Friday 10:00 – 10:50**

In this 50 minute session, we'll provide you with ideas on how to stay ahead of your competition. Want to know the ongoing initiatives SoftPro has to make you more competitive in the market? We'll cover 360 opportunities, the Uniform Mortgage Data Program / eHUD initiative, GFE / On Line Rates, and the Loan Quality initiative. This session is designed to get you thinking forward about how to automate many of your manual processes to meet the new trends in the industry. We want to put you in the driver's seat to gain more market share. Get prepared – come join us and learn more on how to think and stay ahead!

## Introduction to Document Development and Design for Select

**Friday 11:00 – 11:50**

This is an introductory class designed for the SoftPro Select audience to learn the basics of document development and design, including document properties, logic, ReadyDocs, document trees and more. During this session we will help you understand how different types of logic accommodate multiple objects, review coding options and go over how to protect portions of documents while allowing the user to edit certain parts. We will also provide an overview of SPAdmin, ReadyDocs, and ReadyDocs Managers and explain how each function relates to document development and rendering. Come preview and learn how to develop documents using SoftPro Select and experience the

dynamic platform that SoftPro Select has to offer. The document coding possibilities are endless! Come see for yourself and be prepared to participate in the development process during this interactive session!

## Advanced Document Development and Design

**Friday 2:00 – 2:50**

This advanced class is designed for SoftPro Select users who are currently developing their own documents and would like to take their coding to a higher level. During this session we will demonstrate advanced types of coding and explain when to best utilize this coding on various documents.

In this advanced class you will learn how to develop documents that will incorporate the flexibility that SoftPro Select has to offer. The document possibilities are endless. This advanced session will provide you with take away examples of coding to try for yourself on the documents you have developed!

## ADVANCED TRAINING CLASSES FOR STANDARD AND ENTERPRISE EDITIONS

*A wide variety of courses are available to intermediate and advanced users of SoftPro's Standard Edition and Enterprise Edition software.*

## SoftPro 360 - Business Integrations with ProForm Standard and Enterprise Editions

**Thursday 9:00 – 9:50**

Learn more about SoftPro 360 and our latest integrations with Microsoft Outlook, FedEx, UPS, and Underwriter Services. SoftPro 360 links SoftPro customers electronically with a wide array of third party vendors and service providers in the mortgage and title industry. By utilizing this new technology, our customers can reap significant cost savings by eliminating dual keying of information, reducing the amount of time spent communicating with vendors, and tracking all activity to your ProForm file.

## MS Word Merge for ProForm

**Thursday 10:00 – 10:50**

On the fly editing, creating of ProForm friendly documents with no additional programs needed... that is what WordMerge can offer you. Already have a library of MS Word documents that you want to use with ProForm? This class is an introduction to creating and integrating WordMerge documents with ProForm. Class participants will learn basic coding, how to utilize and navigate the prompts database and some advanced IF statements. This course is geared toward the beginner user who has limited knowledge or experience with merge documents.

## Tips & Tricks for Standard and Enterprise

**Thursday 11:00 – 11:50**

If you are a Standard or Enterprise Edition user and want to learn how to take ProForm to the next level then this class is for you! Focus on time saving techniques and tricks we've learned along the way. Not only will you learn answers to the Solutions Center's most frequently asked questions, but you will also find out how to maximize your application by using the ReadyDocs Manager, Template Creation, Keyboard Shortcuts, and Creating Lookup Tables. This class also offers an incredible opportunity for users to share valuable knowledge that they have gathered over the years. So, please come ready to contribute any shortcuts and tricks you've discovered along your path as a SoftPro user.

## Introduction to Crystal Reports

**Thursday 2:00 – 3:30**

Come...look into the crystal ball... I see lots and lots of reports in your future! Learn to traverse Crystal Reports, perform basic Crystal functions, modify existing reports and create new reports specific to your company's needs. No longer be limited to only the information available in files, but open up the entire database to your searches and inquiries. Learn the basics of Crystal Reports now to use with Standard and Enterprise and take the knowledge along with you when you transition to Select, this program transcends all editions of ProForm!

## Advanced Crystal Reports

**Thursday 3:30 – 4:50**

Peering deeper into the crystal ball...you obtained the basics, now take it to the next level! Advanced Reports will show you how to make those basic reports even smarter. Learn how to create formulas, organize data for efficient sorting, and customize selection criteria. Also, bring any questions you may have for the instructor. By the time you're done with this class, you will know all you need to know about making professional reports work seamlessly with our suite of products.

## Complex Closings Made Easy

**Friday 9:00 – 9:50**

Ever wonder how to handle that 1031 exchange? Or if there will be anything different with this Reverse Mortgage closing? The class will help you understand difficult funding aspects and balancing scenarios. Be sure to bring any questions you may have regarding complicated closings. We ask that you bring your solutions to difficult closing situations as well! Your solutions might just save someone else time, too!

## Powerful Reports Plus

**Friday 10:00 - 10:50**

Learn how this new reporting package allows you to quickly compare data and evaluate revenue on a weekly, monthly or annual basis, giving you the ability to show patterns and trends among your organization's closings. Among these 20 additional Order Tracking reports you will also find Deposit Slips and Labels as well as the ability to pull data on your Policy Register, List of Orders and Sales Price. The reports are designed with colorful, easy-to-read charts and graphs that make sharing and interpreting the data easy. As a bonus to attending this course, you will receive the Reports Plus package at no cost to you (a \$195 value).

## ProDesign Basics

**Friday 11:00 - 11:50**

Looking for a little tweak here? Just a slightly different function there? All this is possible with ProDesign. This class will give you the knowledge to create your own ReadyDocs to use in ProForm or to modify the hundreds of free documents that SoftPro provides. Learn the basics for development and key concepts of this very powerful tool.

## Advanced ProDesign

**Friday 2:00 - 2:50**

Want to take your documents a little further? How about a complete overhaul? Then this Advanced ProDesign class is for you! You'll be introduced to advanced coding which will allow you to bend documents to your company's needs. Your options are only limited by your imagination once you take the reins of advanced ProDesign.

# Class Schedule

## Thursday, March 8, 2012

8-9	Opening Remarks and Keynote Address: VJ Smith, Life's Great Moments - <i>The Richest Man in Town</i>	
9-9:50	Endless Possibilities with SoftPro Select	SoftPro 360 Business Integrations for Standard and Enterprise
10-10:50		MicroSoft Word Merge for ProForm
11-11:50	Workflow for Select	Tips and Tricks for Standard and Enterprise
1-2	Speaker Series: Justin Ailes, American Land Title Association - <i>Go where there is no path and leave a trail</i>	
2-2:50	SoftPro 360 Business Integrations for Select	Introduction to Crystal Reports
3-3:50	My Way with MyScreens for Select	
4-4:50	How to Manage Your Office with Reports from Select	
		Advanced Crystal Reports

## Friday, March 9, 2012

8-9	Speaker Series: Chris Christensen, PeirsonPatterson, LLP & Tim Conley, SoftPro - <i>Loan Quality Data and Its Pending Impact to the Title Industry</i>	
9-9:50	SoftPro Select Complex Closings	Complex Closings Made Easy
10-10:50	What's SoftPro Doing to Keep Me Competitive in the Marketplace?	Powerful Reports Plus
11-11:50	Introduction to Document Development and Design	ProDesign Basics
1-2	Speaker Series: VJ Smith - <i>The Exceptional Employee</i>	
2-2:50	Advanced Document Development and Design	Advanced ProDesign

<b>CLASS CODES</b>	<span style="display: inline-block; width: 15px; height: 15px; background-color: #d9ead3; border: 1px solid #ccc; margin-right: 5px;"></span> General Session for all conference attendees	<span style="display: inline-block; width: 15px; height: 15px; background-color: #fff2cc; border: 1px solid #ccc; margin-right: 5px;"></span> SoftPro Select	<span style="display: inline-block; width: 15px; height: 15px; background-color: #d9e1f2; border: 1px solid #ccc; margin-right: 5px;"></span> Advanced Level classes for ProForm Standard or Enterprise Editions
--------------------	--	--	--

# Optional Activities

## Make Time for the Magic

### Enjoy Extra Magic Hours

Each day one of the Theme Parks opens an hour early or stays open up to three hours after regular Park hours for guests staying at select Disney Resorts, giving you even more time to enjoy select attractions before and after your meetings. This is a great way for you to maximize the value of your Disney Theme Park Tickets based around your schedule! Valid Theme Park admission and Walt Disney World® Resort ID are required.



### Theme Park Tickets In Advance

Available only to meeting attendees, their guests and family members, Disney's multi-day and half-day Meeting/Convention tickets are designed to fit any agenda and can't be purchased at the Theme Park gates. For more information or to purchase theme park tickets in advance, look under **Theme Park Tickets** at [www.DisneyConventionEars.com/Tickets](http://www.DisneyConventionEars.com/Tickets).

## Golf Outing

**Wednesday, March 7, Tee Off at 12:15 PM (depart resort @ 11:45 AM)**

Tee off this year's conference at Disney's Palm Golf Course. Experience the natural beauty of the Florida woodlands that makes this majestic course one of America's premier resort destinations. Both a pleasure to play and one of the toughest courses at Walt Disney World® Resort, this Joe Lee masterpiece features sparkling lakes and tropical sand, all in a gorgeous golf landscape populated with strategically placed palms. Placed each year as part of the PGA TOUR FUNAI Classic, Disney's Palm Golf Course offers plenty of challenges for the novice and seasoned pro alike.

This outing includes:

- Club rentals
- Green and cart fees
- Box lunch

When registering for this optional event, be sure to list the names and handicaps of all players.





# Accommodations

**Rooms will be held until Tuesday, February 15. Please make your reservation by then.**

## Room Rates:

Single/Double Occupancy: \$185.00

These rates are for single/double occupancy. Rates are subject to the appropriate state, local and occupancy tax, currently 12.5%.

## Reservations

Each individual room reservation must be confirmed and guaranteed with a deposit equal to the full price of the room for one night. Should an individual cancel a reservation, refund of the deposit will be in accordance with the Hotel's general policy at the time of the conference (at the time of this printing, a refund is given if the reservation is canceled at least five days before arrival).

To make a reservation, call Group Reservations at **1-407-934-3372**. Be sure to refer to the group **SoftPro** when making your reservation in order to secure the group rate. Or, you may reserve a room on-line using the following link:

<http://www.disneyurl.com/SoftProUserGroupConference2012>

## Check-In/Check-Out:

Guest accommodations will be available at 3:00 PM on arrival day and reserved until 11:00 AM on departure day.

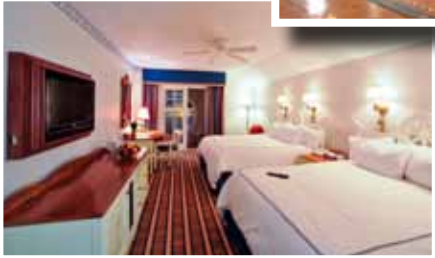
## Extend Your Stay:

Once you're here, you'll discover that the Walt Disney World® Resort offers more magical experiences than you ever dreamed possible. Don't pass up the chance to add extra days before or after your meetings for a spectacular golf or spa getaway or the perfect vacation with family and friends. We'll even extend the same room rates (based on availability) you received for your meeting to any nights you add to your visit. Group rates may not be combined with any other discounts or offers.

## Questions?

If you have any questions or would like more information, please visit Disney's Yacht Club Resort website at

<http://disneyworld.disney.go.com/resorts/yacht-club-resort/>.



**2012**   
**SOFTPRO**<sup>®</sup>  
USER GROUP CONFERENCE



# Transportation

## Disney's Yacht Club Resort

1700 Epcot Resorts Boulevard  
Lake Buena Vista, FL 32830

### Transportation

Complimentary roundtrip Orlando International Airport shuttle for Disney's Yacht Club Resort is available to the resort's overnight guests aboard **Disney's Magical Express**.

Take advantage of the latest innovation in Disney's legendary commitment to service and convenience. This exclusive complimentary shuttle and luggage delivery service conveniently takes you from the airport directly to your Disney Resort and back again when it's time to return.



It's the hassle-free benefit that allows you to arrive at your meeting or event relaxed and stress-free. To book Disney's *Magical Express* Service, call **1-407-827-6777** or for more information, visit [www.DisneyConventionEars.com/dme](http://www.DisneyConventionEars.com/dme).

### Driving Directions

Walt Disney World Resort is located southwest of Orlando, off Interstate 4, west of the Florida Turnpike. Routes from some major Florida starting points are as follows:

#### From Interstate 95, U.S. Highway 1 or southbound on the Florida Turnpike

- Take I-4 West to Walt Disney World Exits

#### From southbound Interstate 75

- Take the Florida Turnpike South to Interstate 4 West to Walt Disney World Resort Exits

#### From northbound on the Florida Turnpike

- Take Osceola Parkway which connects with U.S. Highway 192 and the Walt Disney World Resort Exits

#### From the Daytona area

- Take I-4 West to Walt Disney World Exits

#### From the Tampa area

- Take I-4 East to Walt Disney World Exits

### No Need To Rent a Car

During your stay, enjoy the convenience of Disney transportation throughout the Walt Disney World® Resort. Just steps from your door, boats and motor coaches are waiting to take you to and from the Theme Parks, Water Parks, the Downtown Disney® area, and more.



#### From Miami/Ft. Lauderdale

- Take the Florida Turnpike North to Osceola Parkway West (exit 249) to Walt Disney World Exits

#### From Northeast Florida

- Take I-95 South to I-4 West (exit 260B, old 86) to Walt Disney World Exits

#### From Northwest Florida

- Take I-75 South to Florida Turnpike South (exit 328, old 65), to I-4 West (exit 259) to Walt Disney World Exits

#### From Orlando International Airport

- Take OIA South exit (FL 417S - Toll) to Osceola Parkway West (exit 3) to Walt Disney World Exits

#### From Sanford Airport

- Take Lake Mary Blvd. West to FL 417 South to Osceola Parkway West to Walt Disney World Exits