

Installation Instructions

1.2 Prerequisites

It is required that you install ProForm for Windows before installing the FNFSDK.

System Requirements

Operating System	Windows NT®, Windows 2000, Windows XP® (<i>Vista is <u>not</u> currently supported</i>)
CPU	300 MHz or higher Pentium®-compatible CPU recommended
Memory	64 MB RAM (128 MB RAM recommended)
.NET Framework**	.NET Framework v1.0 and above (The installation routine will prompt to install.)
Adobe® Acrobat® Reader®	Adobe Reader Version 7 and above. (The installation routine will prompt to install.)
Internet Connectivity	For best performance, DSL or greater speed is recommended.
ProForm for Windows Versions	STD: 10.02 and above; Enterprise 4.0 and above; FNF 3.5 and above

**For details on the installation of .Net Framework, please see instructions at the end of this document.

1.3 Installation

This instruction set will outline a common installation for the FNFSDK. To start the installation process, simply click on the link to download the file: <http://softprocorp.com/fnf/agentTRAX-Download.html>

1.3.1 Welcome to the FNFSDK Setup Wizard

The first screen to display in the installation is the welcome screen. Click Next to continue to the next screen.

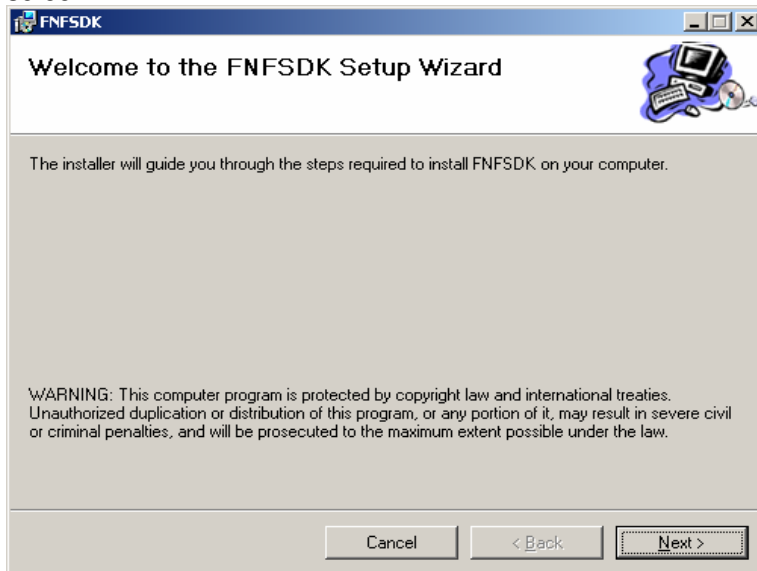


Figure 2 - FNFSDK Setup Wizard

1.3.2 Select Installation Folder

The next screen confirms the location where you would like to install the FNFSDK. Click Next to continue the installation.

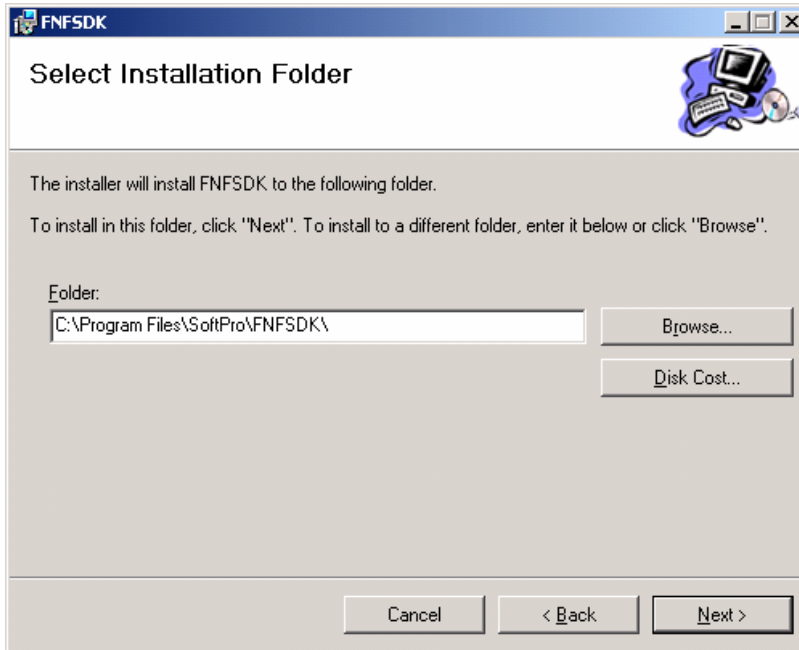


Figure 3 - Select Installation Folder

1.3.3 Confirm Installation

The third screen confirms that the system has collected enough data for the installation. Click Next to start the installation.

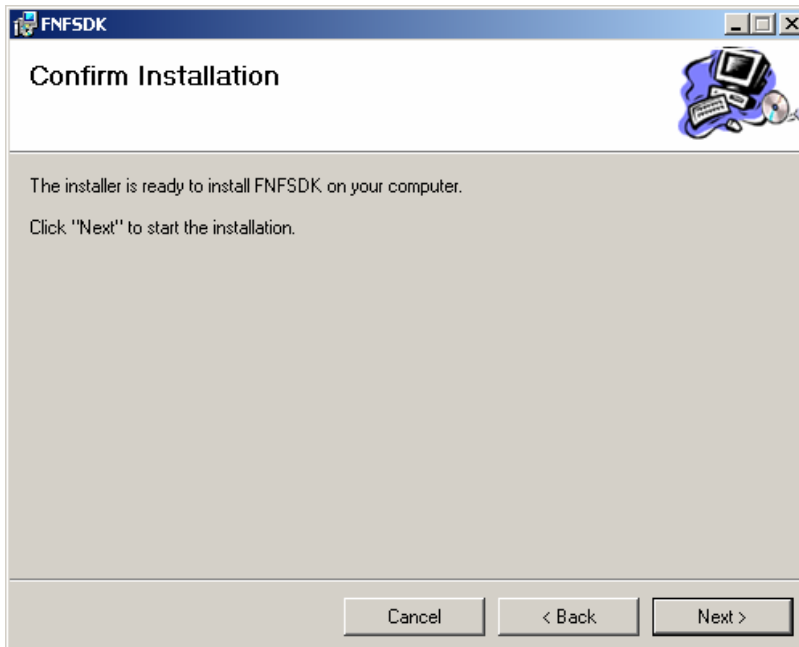


Figure 4 - Confirm Installation

1.3.4 Installing FNFSDK

A progress dialog box displays. The progress meter will move through a complete cycle multiple times.

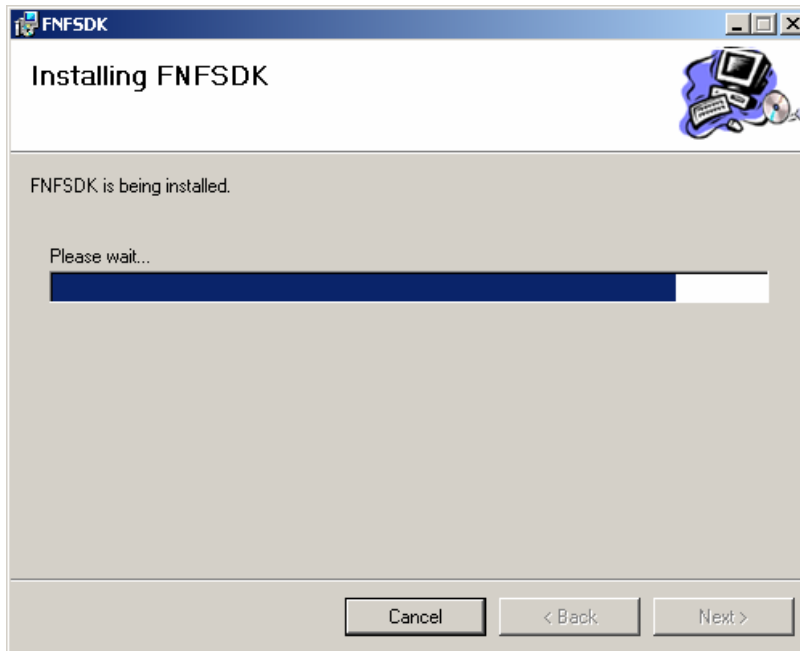


Figure 5 - Installing FNFSDK

1.3.5 Installation Complete

The final screen indicates that the installation completed successfully. Click Close to exit the installation screen.

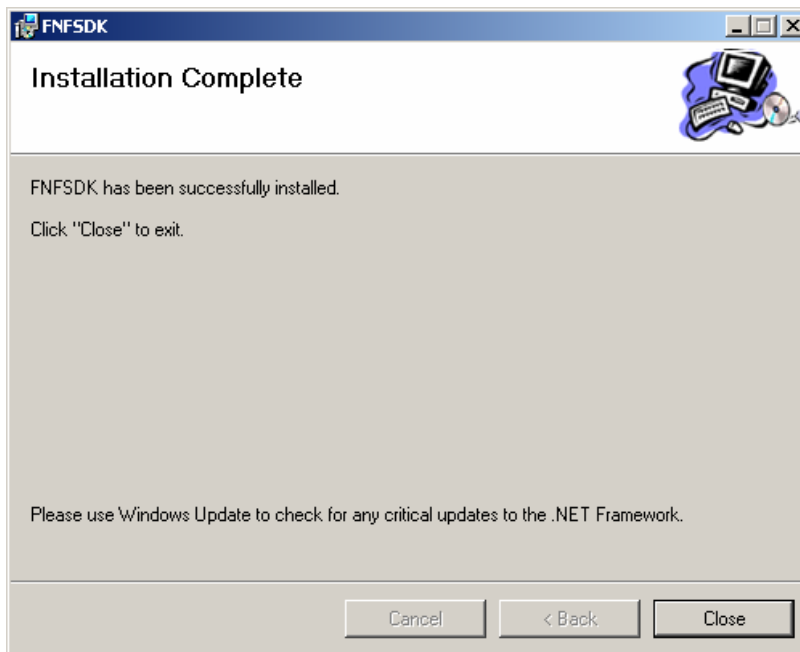
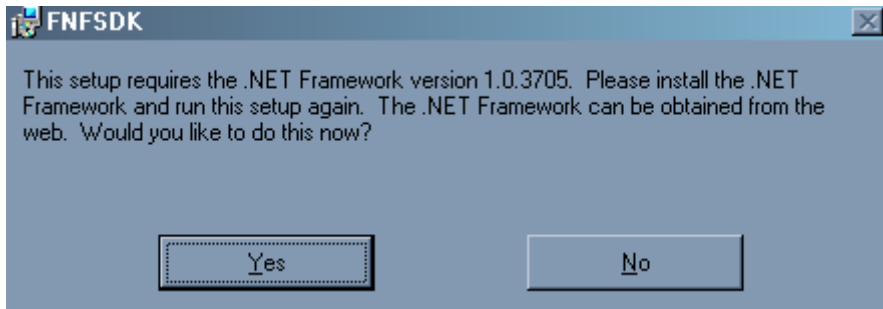
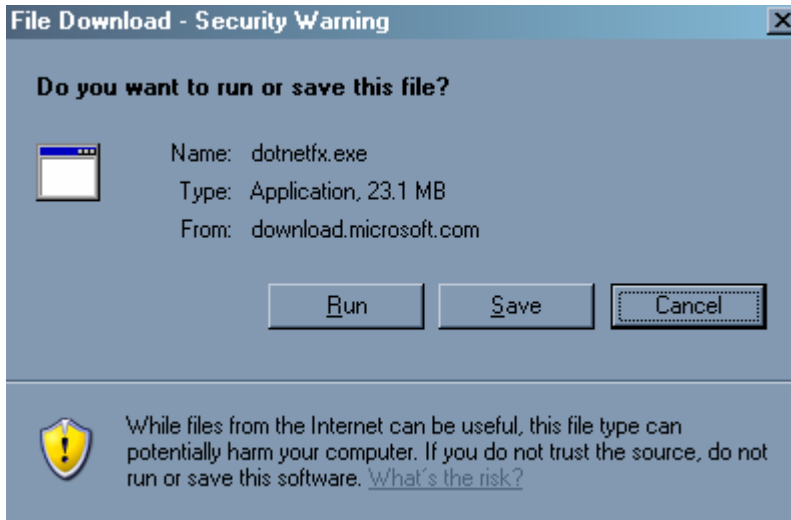


Figure 6 - Installation Complete

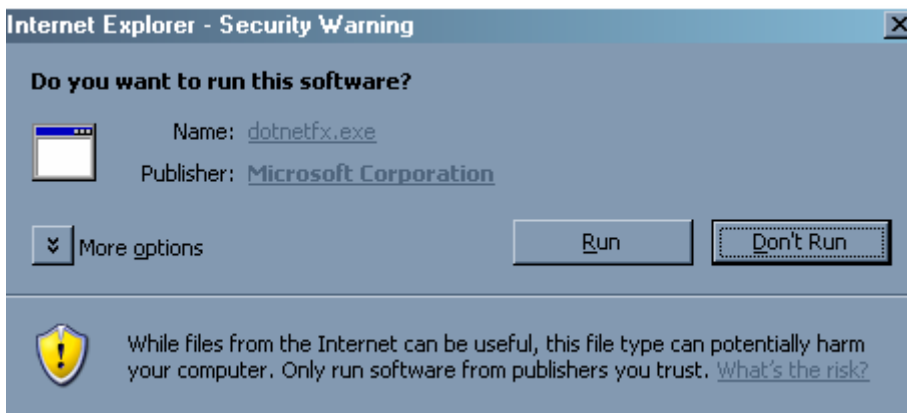
** .Net Instruction details:



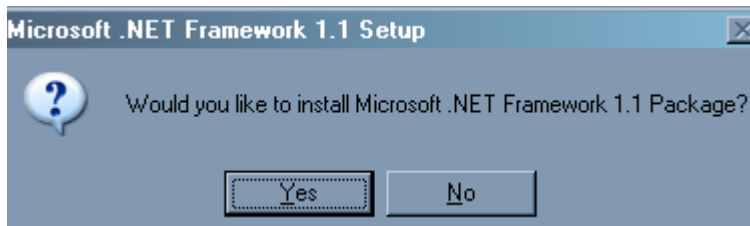
Click "Yes" to continue



Click "Run" to begin the process.



Click on "Run" to start the dotnetfx installation.

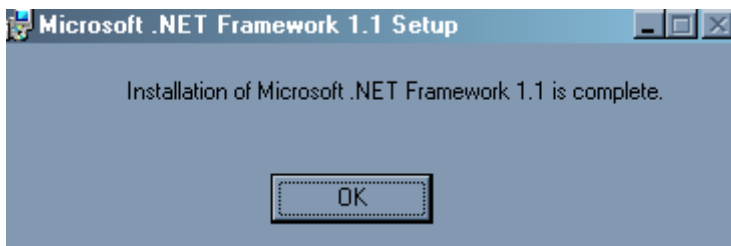


Click on "Yes" to continue with Setup.



Click radio button "I agree" and click "Install"

The installation process will run and once all the components have been installed the follow message will appear.



Click "OK".

To continue with the installation of FNFSDK, please return to <http://softprocorp.com/fnf/agentTRAX-Download.html> and continue the installation of FNFSDK agent TRAX.