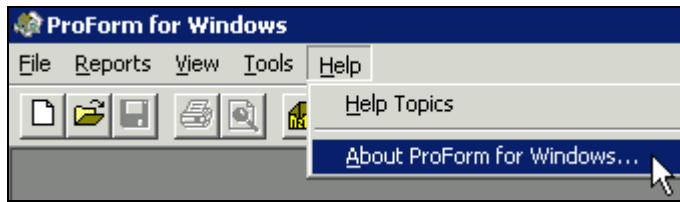
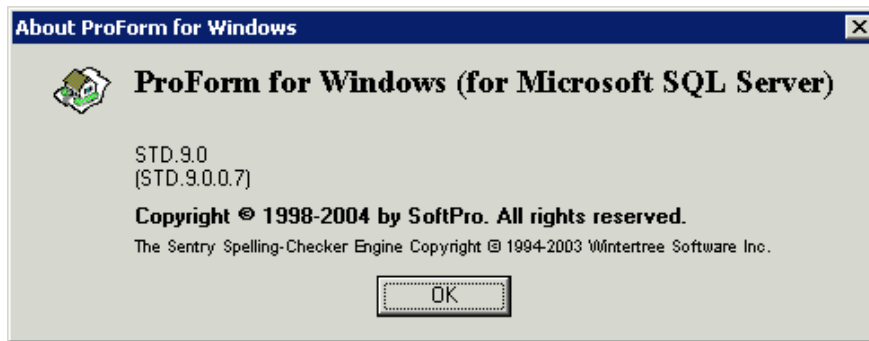


Am I Running Standard or Enterprise Editions?

1. Open ProForm.
2. Click **Help/About**.



3. Note the version number on the dialog that appears. In the example pictured below, the version is **9.0** (Standard Edition).



4. Use the information below to see if you are running Standard or Enterprise Editions. Then download the document set that is designed for the Edition you are running.

Standard Edition Version Numbers

- 8.0
- 8.5
- 9.0
- 10.0

Enterprise Edition Version Numbers

- 2.1.4
- 2.4.1
- 2.4.3
- 3.0
- 4.0